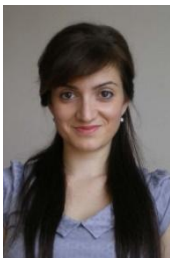


INFORMAȚII PERSONALE



Florina Ardelean

📍 Universitatea de Medicină și Farmacie „Victor Babeș” Timișoara, P-ța. E. Murgu nr. 2, 300041 Timișoara, Romania

✉ ardelean.florina@umft.ro

Sexul F | Data nașterii 07/07/1987 | Naționalitatea Română

EXPERIENȚA PROFESIONALĂ

septembrie 2018 - prezent

Asistent universitar

Universitatea de Medicină și Farmacie “Victor Babeș” Timișoara, Facultatea de Farmacie, Disciplina Botanică Farmaceutică

**Principalele activități și responsabilități**

- susținerea lucrărilor practice de Botanică farmaceutică pentru studenții de la secția română, franceză și asistență de farmacie
- pregătirea materialelor didactice
- cercetare

noiembrie 2017 - 2018

Colaborator la Disciplina de Botanică Farmaceutică, Facultatea de Farmacie

Universitatea de Medicină și Farmacie “Victor Babeș” Timișoara

**Principalele activități și responsabilități**

- susținerea lucrărilor practice de Botanică farmaceutică pentru studenții de la secția română, franceză și asistență de farmacie
- pregătirea materialelor didactice

2013 - 2017

Asistent universitar

Universitatea de Medicină și Farmacie “Victor Babeș” Timișoara, Facultatea de Farmacie, Disciplina Botanică Farmaceutică

**Principalele activități și responsabilități**

- susținerea lucrărilor practice de Botanică farmaceutică pentru studenții de la secția română, franceză și asistență de farmacie
- pregătirea materialelor didactice
- cercetare

2012-2013

Colaborator la Disciplina de Botanică Farmaceutică, Facultatea de Farmacie

Universitatea de Medicină și Farmacie “Victor Babeș” Timișoara

**Principalele activități și responsabilități**

- susținerea lucrărilor practice de Botanică farmaceutică pentru studenții de la secția română, franceză și asistență de farmacie
- pregătirea materialelor didactice

EDUCAȚIE ȘI FORMARE

2016-2017

Modul psiho-pedagogic nivelul I și II

Universitatea de Vest Timișoara

2012- 2017

Studii doctorale – domeniul Medicină

Universitatea de Medicină și Farmacie “Victor Babeș” Timișoara, coordonator Prof. univ. dr. Simona Drăgan

- 2011-2012 **Studii masterale – Formularea și evaluarea produsului dermato-cosmetic**  
Universitatea de Medicină și Farmacie “Victor Babeș” Timișoara
- 2006 -2011 **Studii de licență – Facultatea de Farmacie**  
Universitatea de Medicină și Farmacie “Victor Babeș” Timișoara
- 2002 - 2006 **Colegiul Național “Samuil Vulcan” Beiuș**  
Profil Matematică – Informatică

## COMPETENTE PERSONALE

Limba maternă  
Alte limbi străine cunoscute

Română

	INTELEGERE		VORBIRE		SCRIERE
	Ascultare	Citire	Participare la conversație	Discurs oral	
Engleză	B2	C1	B2	B2	B2
Franceză (DELF B2)	B2	B2	B2	B2	B2

Niveluri: A1/2: Utilizator elementar - B1/2: Utilizator independent - C1/2: Utilizator experimentat  
Cadru european comun de referință pentru limbi străine

- Competențe digitale** Utilizare pachet Microsoft Office™ (Word, Excel, PowerPoint), Chem Draw
- Permis de conducere** Categoria B

## INFORMATII SUPLIMENTARE

- Proiect de cercetare**
- Membru în proiectul bilateral internațional România-Franța, contract RO-FR PN II-CT-789/30.06.2014, cu tema : “Nanostructuri cu aurone, chalcone și extracte vegetale standardizate: dezvoltarea unui nou prototip de agent chemopreventiv și antiinflamator”  
Director proiect Prof. Dr. Antal Diana  
Sursa de finanțare: UEFISCDI  
Volumul finanțării: 28 760 lei
- Burse**
- Stagiu „Séjour Scientifique de haut-niveau”  
Faculté de Pharmacie de Marseille, Université de la Méditerranée Aix-Marseille II, Marseille, Franța  
Perioada: octombrie-noiembrie 2015
  - Bursă doctorală 2014, POSDRU/159/1.5/S/136893 - Parteneriat strategic pentru creșterea calității cercetării științifice din universitățile medicale prin acordarea de burse doctorale și postdoctorale – DocMed.Net\_2.0; “Beneficiile suplimentelor alimentare hipolipemiante în sindromul metabolic”

## LISTA PUBLICAȚII

### 1. TEZA DE DOCTORAT

„Contribuții la studiul extractelor vegetale polifenolice și al suplimentelor alimentare în sindromul metabolic”, susținută în 2017, Conducător științific Prof. univ. Drăgan Simona Ruxanda, Universitatea de Medicină și Farmacie “Victor Babeș” din Timișoara

### 2. CAPITOLE ÎN VOLUME COLECTIVE

2.1. Soica C, Antal D, Andrica F, Babuta R, Moaca A, **Ardelean F**, Ghiulai R, Avram S, Danciu C, Coricovac D, Dehelean C, Paunescu V. *Lupan-skeleton pentacyclic triterpenes with activity against skin cancer: preclinical trials evolution*. In: “Unique Aspects of Anti-cancer Drug Development”, Latosinska JN (editor), InTech, 2017, 27 pag, ISBN 978-953-51-3348-3, Print ISBN 978-953-51-3347-6, DOI: 10.5772/intechopen.68908

2.2. Danciu C, Antal DS, **Ardelean F**, Chiș AR, Șoica C, Andrica F, Dehelean C. *New Insights Regarding the Potential Health Benefits of Isoflavones*. In: „Flavonoids – From Biosynthesis to Human Health”, Justino J (editor), InTech, 2017, 29 pag, ISBN 978-953-51-3424-4, Print ISBN 978-953-51-3423-7, DOI: 10.5772/67896

### 3. ARTICOLE PUBLICATE IN EXTENSO

#### 3.A. ARTICOLE ÎN REVISTE COTATE ISI, CU FACTOR DE IMPACT

3.A.1. Kis B, Ifrim FC, Buda V, Avram S, Pavel IZ, Antal D, Paunescu V, Dehelean CA, **Ardelean F**, Diaconeasa Z, Soica C. Cannabidiol—from Plant to Human Body: A Promising Bioactive Molecule with Multi-Target Effects in Cancer. *International Journal of Molecular Sciences*. 2019, 20(23):5905. IF(2018) = 4.183

3.A.2. Moacă EA, Pavel IZ, Danciu C, Crăiniceanu Z, Minda D, **Ardelean F**, Antal DS, Ghiulai R, Cioca A, Derban M, Simu S. Romanian Wormwood (*Artemisia absinthium* L.): Physicochemical and Nutraceutical Screening. *Molecules*. 2019, 24(17):3087. IF (2018) = 3.060

3.A.3. Moacă EA, Farcaș C, Ghițu A, Coricovac D, Popovici R, Cărăba-Meiță NL, **Ardelean F**, Antal DS, Dehelean C, Avram Ș. *A Comparative Study of Melissa officinalis Leaves and Stems Ethanolic Extracts in terms of Antioxidant, Cytotoxic, and Antiproliferative Potential*, Evidence-Based Complementary and Alternative Medicine, 2018, Article ID 7860456, 12 pages, 2018. IF (2017) = 2.064

3.A.4. **Ardelean F**, Susan R, Borcan F, Moaca A, Antal DS, Soica C Moldovan R, Berceanu Vaduva S, Marti D. *Synthesis and Physico-Chemical Evaluation of Polyurethane Microstructures for Transmembrane Delivery of Reynoutria japonica Extract*. *Materiale Plastice*, 2017, 54(4):651, IF (2017) = 1.248

3.A.5. Danciu C, Soica C, Antal D, Ersilia A, Ghiulai R, Pavel I, **Ardelean F**, Babuta R, Popescu A, Dehelean C. *Natural Compounds in the Chemoprevention of Malignant Melanoma*. *Anticancer Agents Med Chem*, 2017 Nov 21; doi: 10.2174/1871520617666171121142522. IF (2017) = 2.556

3.A.6. Antal DS, **Ardelean F**, Chiș AR, Ollivier E, Serban CM. *Nanoscale delivery systems: actual and potential applications in the natural products industry*. *Curr Pharm Des*. 2017; 23(17):2414-2421. IF (2017) = 2.757

3.A.7. **Ardelean F**, Vlase L, Mocan AM, Gheldiu AM, Antal DS, Trandafirescu C, Marginean O, Dragan S. *Dietary Supplements with Resveratrol, Flavonoids and Phenolic Acids: in-depth HPLC Profiling and Antioxidant Capacity as Quality Markers*. *Rev Chim*, 2017, 68(2):401-407. IF (2017) = 1.412

3.A.8. Antal DS<sup>#</sup>, **Ardelean F<sup>#</sup>**, Pinzaru I, Borcan F, Ledeti I, Coricovac D, Zupko I, Baghdikian B, Ollivier E, Soica C, Bolintineanu SL, *Effects of cyclodextrin complexation on the anti-cancer effects of Cotinus coggygria extract and its constituents, butein and sulfuretin*, *Rev Chim*, 2016, 69(8):1618-1622. IF = 1.232

3.A.9. Antal DS, Citu C, **Ardelean F**, Dehelean C, Vlaia L, Soica C, Vlaia V, Biris M, Sas I, *Metalome of Origanum vulgare: the unknown side of a medicinal and aromatic plant used worldwide*, *Farmacia*, 2015, 63(4):534-538. IF = 1.162

3.A.10. Antal DS, Vlaia V, Dehelean CA, Vlaia L, Trandafirescu C, **Ardelean F**, Pinzaru I, Ionescu D, *Zinc Across Medicinal Plants from Romanian Biodiversity and the Implications for Human Health*, *Rev Chim*, 2015, 66(2):236-239. IF = 0.956

3.A.11. Antal DS, Coricovac D, Soica CM, **Ardelean F**, Panzaru I, Danciu C, Vlaia V, Toma C, *High Cadmium Content in Wild Growing Medicinal Plants from South Western Romania Unexpected Results of a Survey on 29 Species*, *Rev Chim*, 2014, 65 (9):1122-1125. IF = 0.810

### 3.B. ARTICOLE ÎN REVISTE INDEXATE BDI

3.B.1. **Ardelean F**, Moacă EA, Păcurariu C, Antal DS, Dehelean C, Toma CC, Drăgan S. *Invasive Polygonum cuspidatm: physico-chemical analysis of a plant extract with pharmaceutical potential*, Studia Univ VG, SSV, 2016, 26(4):415-421

3.B.2. **Ardelean F**, Stoichescu-Hogea G, Gurban C, Serban MC, Petcu, F, Antal DS, Dragan S. *Effects of resveratrol and coenzyme Q 10 supplementation in metabolic syndrome*, Fiziologia - Physiology, 2015, 86:32-36

3.B.3. Buleu F, Gurban C, Sarbu E, Serban C, Tudor A, **Ardelean F**, Stoichescu-Hogea G, Dragan S. *The relationship between vitamin D, inflammation and the activity of systemic lupus erythematosus*. Fiziologia-Physiology, 2015, 87: 16-20.

### 4. PUBLICAȚII ÎN REZUMAT ÎN REVISTELE UNOR MANIFESTĂRI ȘTIINȚIFICE (CONFERINȚE, CONGRESE, WORKSHOP-URI)

4.1. Antal DS, **Ardelean F**, Moaca A, Dehelean C (2019), *Sambucus nigra: contributions to the phytochemical investigation of its flowers and herbal tea*, The 4th International Conference on Natural Products Utilization: from Plants to Pharmacy Shelf, May 29-01 June 2019, Albena (Bulgaria), Book of Abstracts, p.384, ISSN 2682-9487.

4.2. Antal DS, Coricovac D, **Ardelean F**, Dehelean C (2019), *Cytotoxic and antimigratory effects of sulfuretin and Cotinus coggygria extract*, The 4th International Conference on Natural Products Utilization: from Plants to Pharmacy Shelf, May 29-01 June 2019, Albena (Bulgaria), Book of Abstracts, p.385, ISSN 2682-9487.

4.3. **Ardelean F**, Chis AR, Antal DS (2019), *Sophora japonica L. leaves and branches – anatomical characteristics and microchemical investigation*, The 4th International Conference on Natural Products Utilization: from Plants to Pharmacy Shelf, May 29-01 June 2019, Albena (Bulgaria), Book of Abstracts, p.386, ISSN 2682-9487.

4.4. Chis AR, Romanesc CA, **Ardelean F**, Antal DS (2019), *Plants used in the ethnomedicine of rural areas from Hunedoara county, Romania*, The 4th International Conference on Natural Products Utilization: from Plants to Pharmacy Shelf, May 29-01 June 2019, Albena (Bulgaria), Book of Abstracts, p.392, ISSN 2682-9487.

4.5. Chis AR, Tutac R, **Ardelean F**, Antal DS (2019), *Chenopodium album: key anatomical elements*, The 4th International Conference on Natural Products Utilization: from Plants to Pharmacy Shelf, May 29-01 June 2019, Albena (Bulgaria), Book of Abstracts, p.393, ISSN 2682-9487.

4.6. **Ardelean F**, Moacă EA, Antal DS, Drăgan S (2017), *Troscotul japonez – o specie invazivă ca sursă de fitocompuși cu activitate antioxidantă*, Congresul Medicilor Fitoterapeuți din România, ediția a VIII-a, Sibiu, Carte de rezumate, p.20

4.7. Antal DS, **Ardelean F**, Pinzaru I, Coricovac D, Zupko I, Baghdikian B, Ollivier E, Dehelean CA, Soica C (2016), *Organ-specific anti-cancer effects of natural products from Cotinus coggygria and their cyclodextrin complexes*, 2<sup>nd</sup> International Young Scientists Symposium, 15-17 September 2016, Wroclaw (Poland), Book of Abstracts, p.58

4.8. **Ardelean F**, Chis AR, Antal DS, Dragan S (2016), *What can be learned from ethnobotany in the management of metabolic syndrome?*, 9<sup>th</sup> CMAPSEEC, 26-29 May 2016, Plovdiv (Bulgaria), Book of Abstracts, pp4

4.9. **Ardelean F**, Vasiiu GL, Chis AR, Antal DS (2016), *Anatomical structure and microchemical investigation of reducing polyphenols in Hippophae rhamnoides L. products*, 9<sup>th</sup> CMAPSEEC, 26-29 May, Plovdiv (Bulgaria), Book of Abstracts, pp3

4.10. Chis AR, **Ardelean F**, Antal DS (2016), *Ethnopharmaceutical study of medicinal plants used in some rural areas of western Romania*, 9<sup>th</sup> CMAPSEEC, 26-29 May, Plovdiv (Bulgaria), Book of Abstracts, pp21

4.11. Chis AR, Martin M, **Ardelean F**, Antal DS (2016), *Key anatomical elements of Mahonia aquifolium (Pursh) Nutt. Vegetative organs*, 9<sup>th</sup> CMAPSEEC, 26-29 May, Plovdiv (Bulgaria), Book of Abstracts, pp22

4.12. **Ardelean F**, Chis AR, Antal DS (2016), *Japanese knotweed – an invasive plant as source of phytocompounds with health benefits*, Phytocompounds and extracts from biodiversity: scaffolds for new products with anti-inflammatory and chemopreventive activity, Abstracts of the international workshop of the Romanian-French bilateral project PN II-CT-789/30.06.2014, p.26

4.13. **Ardelean F**, Chis AR, Antal DS (2016), *In situ microchemical reactions of Reynoutria japonica*

*underground parts*, Phytocompounds and extracts from biodiversity: scaffolds for new products with anti-inflammatory and chemopreventive activity, Abstracts of the international workshop of the Romanian-French bilateral project PN II-CT-789/30.06.2014, p.27

4.14. Antal DS, **Ardelean F**, Chis A (2016), *Plant species used in traditional Romanian dermatologic treatments: a starting point in the quest for new anti-inflammatory phytocompounds*, Phytocompounds and extracts from biodiversity: scaffolds for new products with anti-inflammatory and chemopreventive activity, Abstracts of the international workshop of the Romanian-French bilateral project PN II-CT-789/30.06.2014, p.23

4.15. Chis AR, **Ardelean F**, Antal DS (2016), *Aristolochia clematitis: a controversial anti-cancer plant used in Romanian folk medicine*, Phytocompounds and extracts from biodiversity: scaffolds for new products with anti-inflammatory and chemopreventive activity, Abstracts of the international workshop of the Romanian-French bilateral project PN II-CT-789/30.06.2014, p.25

4.16. Chis AR, **Ardelean F**, Antal DS (2016), *Amentoflavone: a versatile natural compound with anti-inflammatory and anti-proliferative activity*, Phytocompounds and extracts from biodiversity: scaffolds for new products with anti-inflammatory and chemopreventive activity, Abstracts of the international workshop of the Romanian-French bilateral project PN II-CT-789/30.06.2014, p.22

4.17. Antal DS, **Ardelean F**, Chis AR (2015), *Calcium oxalate crystal diversity: a peculiarity of the plant kingdom*, The importance of using micro crystals in therapy – Abstracts of the workshop of the Romanian-French bilateral project 791/2014, p.77

4.18. Antal DS, **Ardelean F**, Andrica F, Danciu C, Avram S. (2015) Anatomical characteristics and tissue localization of various flavonoid subclasses in *Cotinus coggygria* stem and leaf cross-sections. 63<sup>th</sup> Internat. Congress of the Society for Medicinal Plant and Natural Product Research, Budapest (Hungary) 23-27. 08. 2015. Abstract in Planta Medica 2015; 81 (16), DOI: 10.1055/s-0035-1565780, IF (2015)=1.99

4.19. **Ardelean F**, Dragos D, Szabadai Z, Antal DS. (2014) *Propolis profiling of samples from southwestern Romania (Lugoj Region): new data*. Proc. of the 8th CMAPSEEC, 19-22 May 2014, Durres (Albania), Book of Abstracts, pp. 174

4.20. Antal DS, **Ardelean F**. (2014) *Status of Wild –Growing Medicinal plants in the Aninei Mountains (Western Romania): recent data*, Proc. of the 8th CMAPSEEC, 19-22 May 2014, Durres (Albania), Book of Abstracts, pp. 46

4.21. Antal DS, **Ardelean F**, Dehelean CA (2014) *Could medicinal plants offer alternatives to improve the human iron pool?* Proc. of the 8th CMAPSEEC, 19-22 May 2014, Durres (Albania), Book of Abstracts, pp. 131

4.22. **Ardelean F**, Antal DS, Dragoş D (2014), *Contributions to the study of pollen morphology from medicinal plants*, National Congress of Pharmacy From Romania with international participation, 24-27 September 2014, XV<sup>th</sup> edition, Book of Abstracts, p. 122

4.23. Antal DS, **Ardelean F**, Dehelean CA (2014), *Equisetum arvense herbal tea: extensive phytochemical analysis of a frequently recommended, but poorly known preparation*, National Congress of Pharmacy From Romania with international participation, 24-27 September 2014, XV<sup>th</sup> edition, Book of Abstracts, p. 81

4.24. **Ardelean F** (2014), *Symphytum officinale in Romanian phytotherapy: remedy or toxic?*, 7<sup>th</sup> European Congress for Integrative Medicine 2014, 10-11 october 2014, Belgrad, Book of Abstracts - Acupuncture and electro-therapeutics research. International Journal of Integrated Medicine, 39 (3-4), p. 471

4.25. **Ardelean F** (2014), *Association of resveratrol and statins in metabolic syndrome: what is the current evidence?*, 7<sup>th</sup> European Congress for Integrative Medicine 10-11 october 2014, Belgrad, Book of Abstracts - Acupuncture and electro-therapeutics research. International Journal of Integrated Medicine, 39 (3-4), p. 467

4.26. Antal DS, **Ardelean F** (2015), *Cotinus coggygria Scop. in Romanian traditional medicine: results of an ethnobotanical survey performed in the South-Western part of the country*, Natural products as a source of compounds with chemopreventive and anti-inflammatory activity – Abstracts of the international workshop of the Romanian-French bilateral project PN II-CT-789/30.06.2014, p. 22

4.27. **Ardelean F**, Antal DS, Dragan S (2015), *Resveratrol as anti-inflammatory agent in metabolic syndrome: a review of the recent literature*, Natural products as a source of compounds with chemopreventive and anti-inflammatory activity – Abstracts of the international workshop of the Romanian-French bilateral project PN II-CT-789/30.06.2014, p. 36

4.28. **Ardelean F**, Antal DS (2015), *Butein: a chalcone with multitarget health effects*, Natural products as a source of compounds with chemopreventive and anti-inflammatory activity – Abstracts of the international workshop of the Romanian-French bilateral project PN II-CT-789/30.06.2014, p. 36

4.29. Chis AR, **Ardelean F**, Antal DS (2015), *Plants with anti-inflammatory effects used in the ethnomedicine of rural areas from Romania (Banat region)*, Natural products as a source of compounds with chemopreventive and anti-inflammatory activity – Abstracts of the international workshop of the Romanian-

French bilateral project PN II-CT-789/30.06.2014, p. 21

4.30. Anton MA, **Ardelean F**, Antal DS (2015), *Phytochemicals in chemoprevention: new developments*, Natural products as a source of compounds with chemopreventive and anti-inflammatory activity – Abstracts of the international workshop of the Romanian-French bilateral project PN II-CT-789/30.06.2014, p. 23, ISBN 978-606-8456-67-6

4.31. Nicolescu R, **Ardelean F**, Antal DS (2015), *Anatomical studies and developmental parameters of Lycium barbarum (wolfberry) in the environmental conditions of Banat region*, Natural products as a source of compounds with chemopreventive and anti-inflammatory activity – Abstracts of the international workshop of the Romanian-French bilateral project PN II-CT-789/30.06.2014, p. 34, ISBN 978-606-8456-67-6

## 5. CĂRȚI

5.1. Antal DS, **Ardelean F** (2019), Teste de botanică pentru concursul de admitere la Facultatea de Farmacie din Timișoara, Editura „Victor Babeș” Timișoara, ISBN 978-606-786-113-6

5.2. Antal DS, **Ardelean F** (2018), Angiosperme medicinale : actualități farmacobotanice, Editura „Victor Babeș” Timișoara, ISBN 978-606-786-103-7

Ardelean Florina